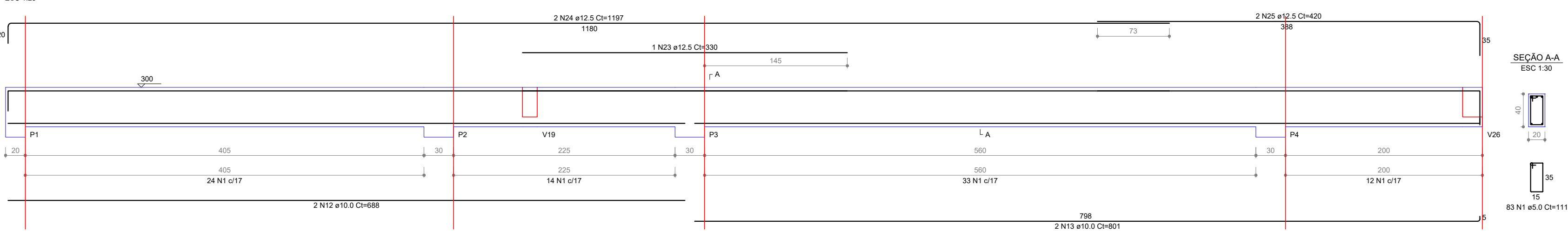
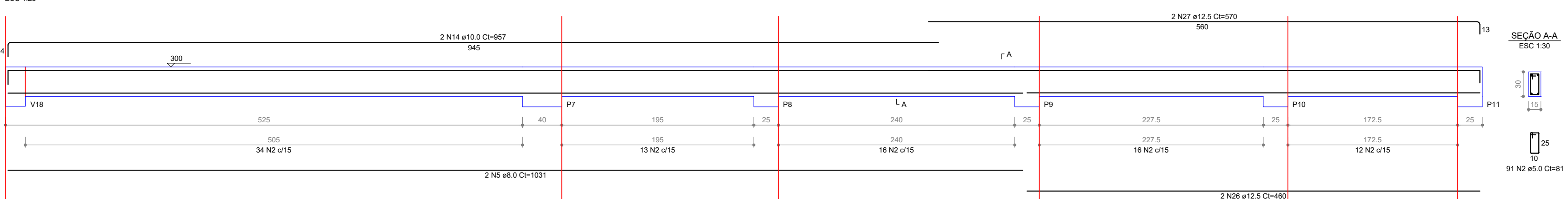


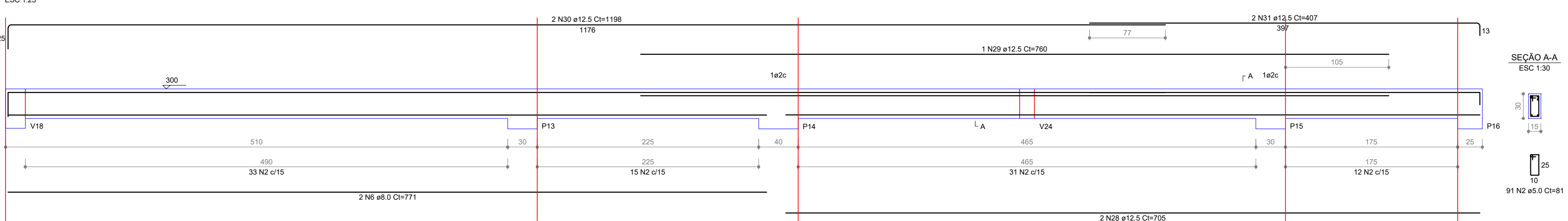
V1 (20 x 40)



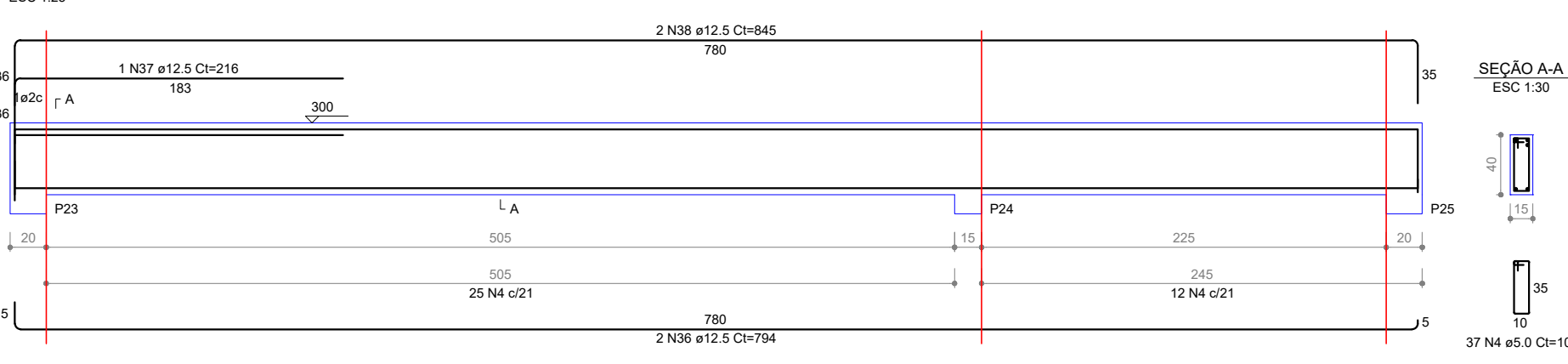
V2 (15 x 30)



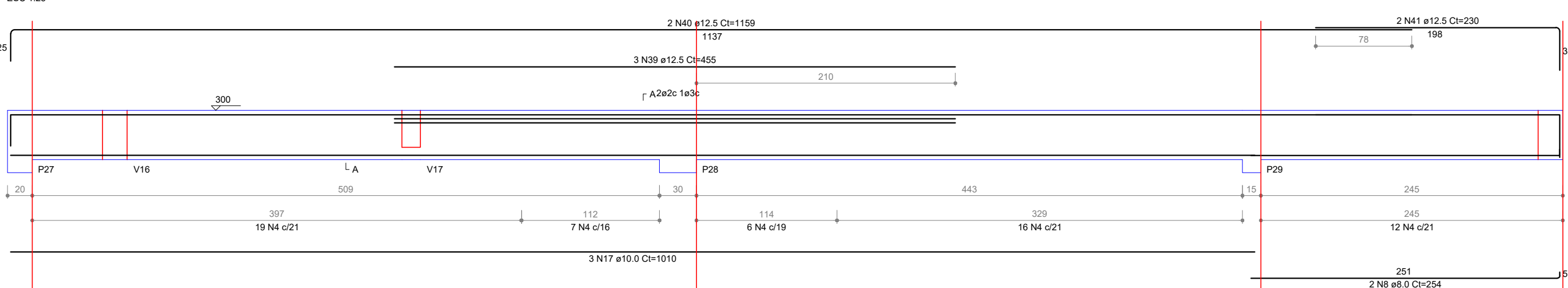
V3 (15 x 30)



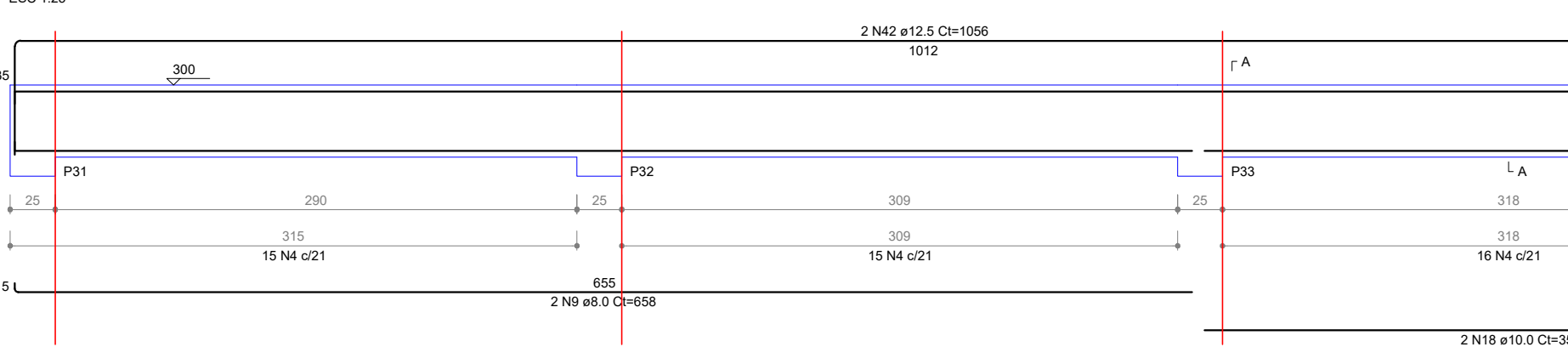
V7 (15 x 40)



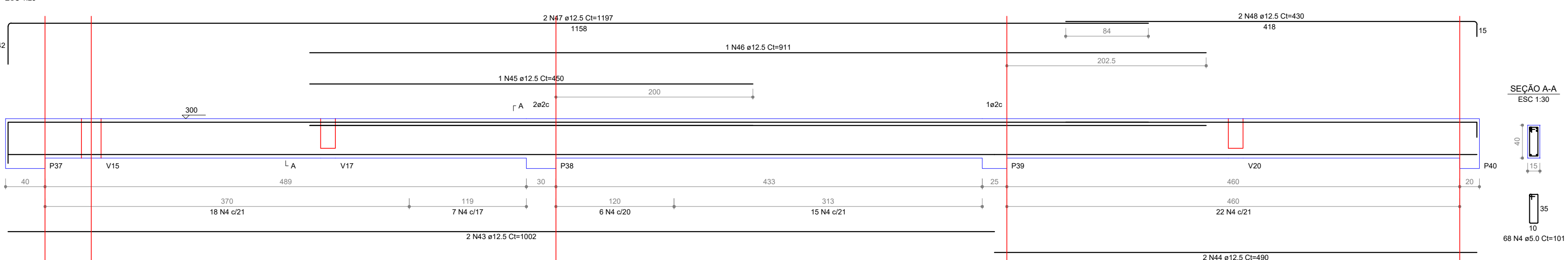
V8 (15 x 40)



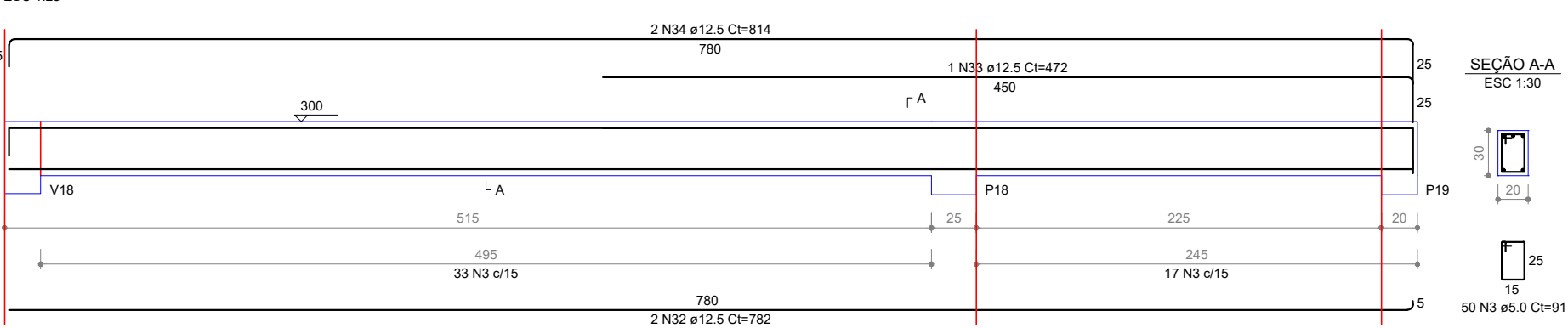
V9 (15 x 40)



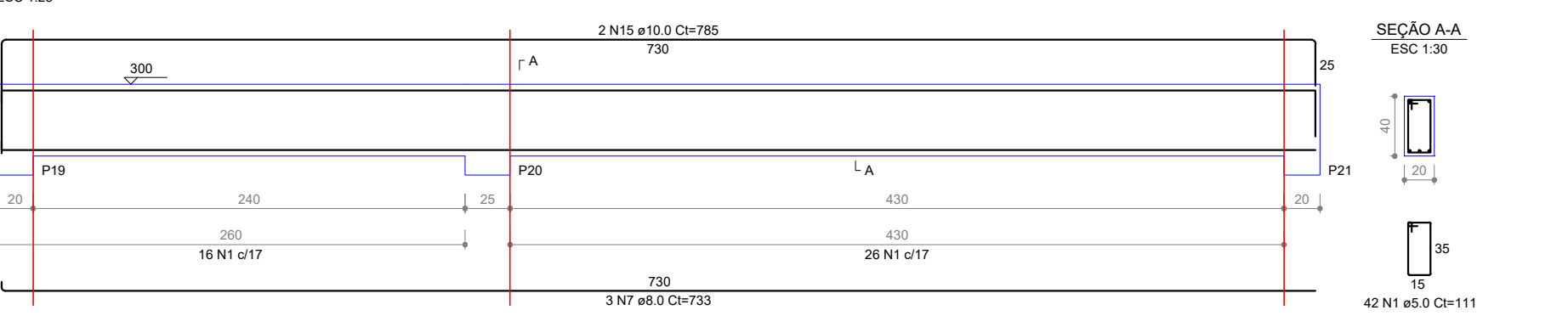
V11 (15 x 40)



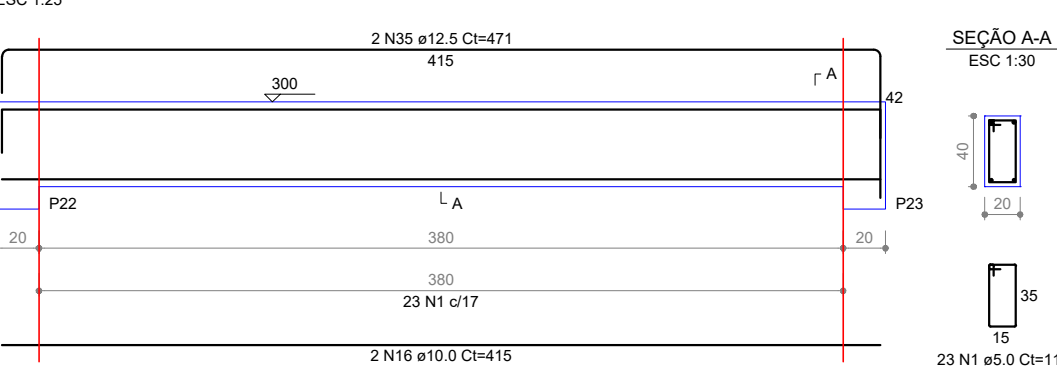
V4 (20 x 30)



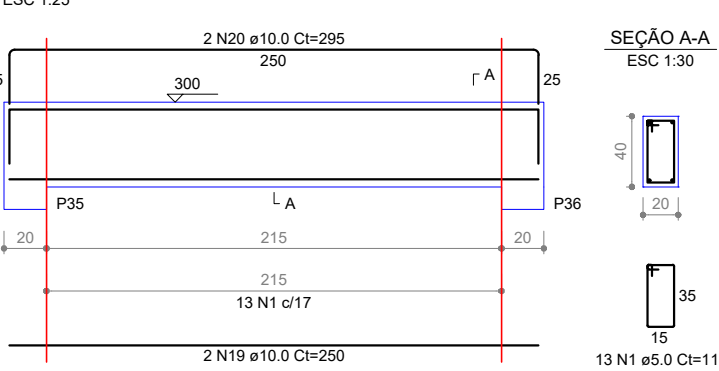
V5 (20 x 40)



V6 (20 x 40)



V10 (20 x 40)



RELAÇÃO DO AÇO					
AÇO	N	DIAM (mm)	QUANT	C.UNIT (cm)	C.TOTAL (cm)
CA80	1	8.0	241	111	26751
	2	5.0	182	81	14742
	3	5.0	59	91	4550
	4	8.0	211	101	21311
	5	8.0	1031	262	2692
	6	8.0	2	771	1542
	7	8.0	2	733	2199
	8	8.0	2	254	508
	9	8.0	2	656	1316
	10	8.0	6	490	2880
	11	8.0	6	518	3176
	12	10.0	2	688	1376
	13	10.0	2	801	1602
	14	10.0	2	957	1914
	15	10.0	2	785	1570
	16	10.0	2	415	830
	17	10.0	2	1015	2030
	18	10.0	2	351	702
	19	10.0	2	250	500
	20	10.0	2	295	590
	21	10.0	2	490	980
	22	10.0	2	535	1070
	23	12.5	1	330	330
	24	12.5	2	1197	2394
	25	12.5	2	420	840
	26	12.5	2	460	920
	27	12.5	2	570	1140
	28	12.5	2	705	1410
	29	12.5	1	760	760
	30	12.5	2	1198	2396
	31	12.5	2	407	814
	32	12.5	2	732	1464
	33	12.5	1	472	472
	34	12.5	2	814	1628
	35	12.5	2	471	942
	36	12.5	2	794	1588
	37	12.5	1	216	216
	38	12.5	2	845	1690
	39	12.5	2	455	910
	40	12.5	2	1159	2318
	41	12.5	2	230	460
	42	12.5	2	1056	2112
	43	12.5	2	1002	2004
	44	12.5	2	490	980
	45	12.5	1	450	450
	46	12.5	1	911	911
	47	12.5	2	1197	2394
	48	12.5	2	430	860

RESUMO DO AÇO				
AÇO	DIAM (mm)	C.TOTAL (m)	PESO + 10% (kg)	
CA80	8.0	136.2	59.1	
	10.0	141.6	96.1	
	12.5	329.6	349.2	
CA80	5.0	673.3	114.2	
PESO TOTAL (kg)		504.4		
CA80		114.2		
Volume de concreto (C-30) = 8.06 m³				
Área de forma = 115.86 m²				



OBRA

LOCAL
Rua José Zanette, Cotiporã/RS

CONSTRUÇÃO DO BERÇÁRIO E.M.E.I AMOR E CARINHO

PROJETO ARQUITETÔNICO

Eng. Civil Camilla Caccia
Eng. Civil Cristiano Fugali

CREA/RS 190280
CREA/RS 236549

PROPRIETÁRIO

PREFEITURA MUNICIPAL DE COTIPORÃ | CNPJ: 90.898.487/0001-64

EXECUÇÃO

COLABORAÇÃO

Jordana Bergamin Regia

ASSUNTO

PROJETO ESTRUTURAL: VIGAS_04

PROTocolado EM:

APROVADO EM:

VERSÃO

DATA 10/07/2021

ESCALA

PRANCHA

15/16